



# ENT Accessories Features and Benefits

## OUTLET AND SWITCH BOXES W/ ECCENTRIC KNOCKOUTS, ENT BRIDGE

**Carlon Exclusive**

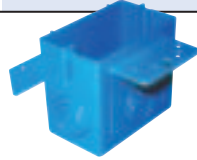


### Outlet and Switch Boxes w/ Eccentric Knockouts

Part Numbers: A122, A238, A238DIV  
(Patent Pending)



Features	Benefits
<ul style="list-style-type: none"> <li>• <b>Nonmetallic, Noncorrosive, Nonconductive</b></li> </ul>	<ul style="list-style-type: none"> <li>• Extends product life, eliminates rust &amp; the need for replacement, &amp; provides safe handling/installation.</li> <li>• Lightweight</li> </ul>
<ul style="list-style-type: none"> <li>• <b>Dual Service Capability</b></li> </ul>	<ul style="list-style-type: none"> <li>• The Outlet Box Divider provides a barrier for applications requiring high/low voltage in the same box.</li> </ul>
<ul style="list-style-type: none"> <li>• <b>Eccentric Knockouts</b></li> </ul>	<ul style="list-style-type: none"> <li>• Allows selective ENT openings 1/2", 3/4" and 1"</li> </ul>
<ul style="list-style-type: none"> <li>• <b>Box Capacity</b></li> </ul>	<ul style="list-style-type: none"> <li>• Provides the largest capacity in market – 22 cu. in. Single Gang and 38 cu. in. Double Gang</li> <li>• Able to accommodate any size device.</li> </ul>
<ul style="list-style-type: none"> <li>• <b>Easy Installation</b></li> </ul>	<ul style="list-style-type: none"> <li>• Fast/easy installations - Nail on or screw on.</li> <li>• Wood or Steel Stud installation.</li> <li>• Multiple mounting capabilities.</li> <li>• Saves time and money.</li> </ul>
<ul style="list-style-type: none"> <li>• <b>Made from a highly engineered thermoplastic material</b></li> </ul>	<ul style="list-style-type: none"> <li>• Rugged and Durable.</li> </ul>
<ul style="list-style-type: none"> <li>• <b>Design Styles</b></li> </ul>	<ul style="list-style-type: none"> <li>• Single Gang and Double Gang. The double gang is also a 4 square box.</li> </ul>
<ul style="list-style-type: none"> <li>• <b>Fewer SKUs</b></li> </ul>	<ul style="list-style-type: none"> <li>• One product accepts a number of conduit sizes.</li> <li>• Two Gang doubles as 4 Square Box.</li> <li>• Numerous mounting capabilities.</li> <li>• Dual service.</li> </ul>



Single Gang – 22 cu. in.

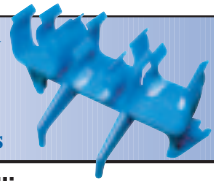


Combination Two Gang/Four Square Box – 38 cu. in.



Outlet Box Divider

**Carlon Exclusive**



### Carlon Exclusive – ENT Bridge

Part Number: A239DEF  
(Patent Pending)

Features	Benefits
<ul style="list-style-type: none"> <li>• <b>Nonmetallic, Noncorrosive, Nonconductive</b></li> </ul>	<ul style="list-style-type: none"> <li>• Extends product life, eliminates rust and the need for replacement, and provides safe handling/installation.</li> </ul>
<ul style="list-style-type: none"> <li>• <b>Flexible</b></li> </ul>	<ul style="list-style-type: none"> <li>• Accommodates ENT and/or rigid conduit sizes 1/2", 3/4" and 1"</li> </ul>
<ul style="list-style-type: none"> <li>• <b>Minimizes Dips</b></li> </ul>	<ul style="list-style-type: none"> <li>• Makes pulling wire/cable fast and easy by maintaining straight runs for ENT.</li> <li>• Saves time and money.</li> </ul>
<ul style="list-style-type: none"> <li>• <b>Anti-Slip Design</b></li> </ul>	<ul style="list-style-type: none"> <li>• Prevents ENT from pulling/slipping out during cable pulls.</li> </ul>
<ul style="list-style-type: none"> <li>• <b>Snap-In Design</b></li> </ul>	<ul style="list-style-type: none"> <li>• Fast/easy installations - Nail on or screw on.</li> <li>• Lay-in snap design.</li> <li>• Saves time and money.</li> </ul>
<ul style="list-style-type: none"> <li>• <b>Made from a highly engineered thermoplastic material</b></li> </ul>	<ul style="list-style-type: none"> <li>• Rugged and Durable.</li> <li>• Will not crush/collapse under the tremendous weight of concrete installations.</li> <li>• Designed to retain conduit; however, less resistant than connectors &amp; boxes, so bridge acts as a strain relief when conduit is stepped on.</li> </ul>

**CARLON ENT SOLUTIONS: READY TO USE OUT OF THE BOX.**

25701 Science Park Drive • Cleveland, Ohio 44122 • (216) 464-3400 • Fax: (216) 766-6444