

RESI-GARD COST ESTIMATOR

The material costs associated with installing a Structured Cable Management System in the average American family home is minimal. Following is an example of a list price material cost calculation per run.

LIST PRICE PRODUCT COSTS:

3/4" Resi-Gard	\$ 0.58/ft.
3/4" Snap-In Adapter	\$ 0.93/ea.
3/4" Resi-Gard Clamp*	\$1.56/ea.*
2" Resi-Gard	\$ 1.50/ft.
2" Male Terminal Adapter	\$ 1.02/ea.
2" Resi-Gard Clamp*	\$3.77/ea.*
1-Gang Bracket	\$ 1.00/ea.

ASSUME:

- 1st Floor---** Average 32 feet from outlet to panel
- 2nd Floor---** Average 44 feet from outlet to panel
- Chase-----** 30 feet main chase to panel

*1 ea = bag of 5 Pieces

MATERIAL COST PER OUTLET

1st Floor

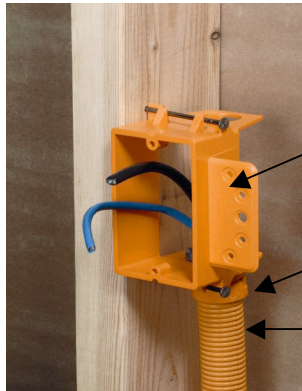
3/4" Resi-Gard (32 ft)	\$18.56
1-Gang Bracket (1)	\$ 1.00
3/4" Snap-In Adapter (1)	\$ 0.93
3/4" Resi-Gard Clamp (1)	\$ 0.31
Total List Price per Outlet:	\$20.80

2nd Floor

3/4" Resi-Gard (44 ft)	\$25.52
1-Gang Bracket (1)	\$ 1.00
3/4" Snap-In Adapter (1)	\$ 0.93
3/4" Resi-Gard Clamp (1)	\$ 0.31
Total List Price per Outlet:	\$29.01

Main Chase

2" Resi-Gard (30 ft)	\$ 45.00
2" Male Terminal (1)	\$ 1.02
Adapter (1)	\$ 0.93
2" Resi-Gard Clamp (1)	\$ 0.75
Total List Price per Chase:	\$47.70



- 1-Gang Bracket (SC100A)
- Snap-In Adapter (SC253E)
- 3/4" Resi-Gard (SCE4X1-100)

Assume 6 Resi-Gard runs:

- (3) – Second Floor – 3 Bedrooms
- (1) – First Floor – Den
- (1) – First Floor – Great Room
- (1) – First Floor – Kitchen

Total Carlon SCMS List Price Cost:

	\$47.70	Main Chase
\$20.80 x 3 =	\$62.40	3 First Floor Runs
\$27.73 x 3 =	\$83.19	3 Second Floor Runs
	\$193.29	Total SCMS List Price Material Cost

	Release Date:	01-21-03	Job Title:	Resi-Gard Cost Estimator
	Contact Info:	25701 Science Park Drive * Cleveland, Ohio * 44122 1-800-3CARLON * www.carlon.com		Document No:

Location: _____

1. What Box or Bracket will you install at this location?

Part Number	Description	List Price per ea. or ft.	Order Quantity	SubTotal \$ (List Price X Order Qty.)
SC100A	1 Gang Low Voltage Bracket	\$1.00		
SC100ADJC	1 Gang Adj. Low Volt Bracket-Cut Off	\$2.80		
SC100R	1 Gang Old Work Bracket, Low Voltage	\$1.40		
SC100SC	1 Gang Low Voltage Add-On Bracket	\$1.50		
SC200A	2 Gang Low Voltage Bracket	\$1.50		
SC200ADJC	2 Gang Adj. Low Volt Bracket-Cut Off	\$4.60		
SC200DV	2 Gang Dual Voltage Box/Bracket	\$1.84		
SC200R	2 Gang Old Work Bracket, Low Voltage	\$1.90		
SCA410	4" Sq. 1/2" Rsd. 1-Gang Orange Cover	\$0.98		
SCDIV	Orange Super Blue Divider	\$0.50		
BH235A	2 Gang Heavy Wall Box	\$2.84		
BH353A	3 Gang Heavy Wall Box	\$3.58		
BH464A	4 Gang Heavy Wall Box	\$5.40		

2. What Size Resi-Gard? 3/4", 1", 1 1/4", 1 1/2", or 2" What fittings do you need per size?

Part Number	Description	List Price per ea. or ft.	Order Quantity	SubTotal \$ (List Price X Order Qty.)
SCE4X1-100	3/4" Resi-Gard, 100 ft	\$0.58		
SCA240E	3/4" Resi-Gard Quick Con. Coupling	\$0.77		
SCA243E	3/4" Resi-Gard Q.C. Threaded Adapter	\$1.26		
SCA253E	3/4" Resi-Gard Q.C. Snap-In Adapter	\$0.93		
SCE977EC	3/4" Resi-Gard Conduit Clamp; 1 ea=bag of 5	\$1.56		
SCF4X1C-100	1" Resi-Gard with tape, 100 ft.	\$0.76		
SCA240F	1" Resi-Gard Quick Con. Coupling	\$1.24		
SCA243F	1" Resi-Gard Q.C. Threaded Adapter	\$1.79		
SCA253F	1" Resi-Gard Q.C. Snap-In Adapter	\$1.41		
SCE977FC	1" Resi-Gard Conduit Clamp; 1 ea=bag of 5	\$2.60		
SCG4X1C-100	1 1/4" Resi-Gard with tape, 100 ft	\$0.86		
SCE940G	1 1/4" Resi-Gard Std. Coupling	\$0.43		
SCE943G	1 1/4" Resi-Gard Male Term. Adapter	\$0.64		
SCE977GC	1 1/4" Resi-Gard Conduit Clamp; 1 ea=bag of 5	\$2.99		
SCH4X1C-50	1 1/2" Resi-Gard with tape, 50 ft.	\$1.05		
SCE940H	1 1/2" Resi-Gard Std. Coupling	\$0.58		
SCE943H	1 1/2" Resi-Gard Male Term. Adapter	\$0.77		
SCE977HC	1 1/2" Resi-Gard Conduit Clamp; 1 ea=bag of 5	\$3.06		
SCJ4X1C-50	2" Resi-Gard with tape, 50 ft.	\$1.50		
SCE940J	2" Resi-Gard Std. Coupling	\$0.79		
SCE943J	2" Resi-Gard Male Term. Adapter	\$1.02		
SCE977JC	2" Resi-Gard Conduit Clamp; 1 ea=bag of 5	\$3.77		

3. Do you need solvent cement to glue the fittings (1 1/4", 1 1/2", and 2") to the flexible raceway?

Part Number	Description	List Price per ea. or ft.	Order Quantity	SubTotal \$ (List Price X Order Qty.)
VC9963SC	Resi-Gard Solvent Cement; 16 oz.	\$7.40		

4. Are you installing cable outside the flexible raceway? Do you need clips to attach the cable to the stud?

Part Number	Description	List Price per ea. or ft.	Order Quantity	SubTotal \$ (List Price X Order Qty.)
SC12CC	1/2" Cable Clip; 1 ea=bag of 25	\$4.59		
SC14CC	1/4" Cable Clip; 1 ea=bag of 100	\$6.48		
SC34CC	3/4" Cable Clip; 1 ea=bag of 100	\$5.10		

Total: